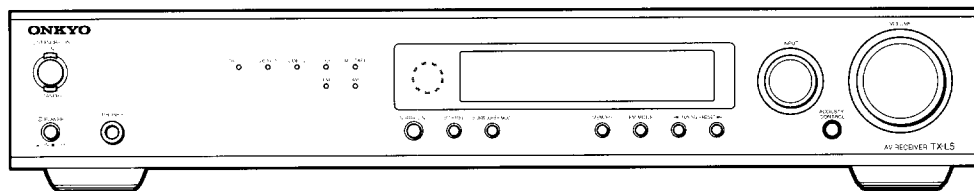


# ONKYO® SERVICE MANUAL

Schematic diagram & Printed circuit board view only

## PCB Component Layout


### AV RECEIVER MODEL TX-L5



#### Silver and Titan models

SMDD,SMDT	120 V AC, 60 Hz
TMPP,SMPP	230-240 V AC, 50 Hz
SMGT,SMGR	220-230 V AC, 50 Hz

#### SAFETY-RELATED COMPONENT WARNING!!

COMPONENTS IDENTIFIED BY MARK  ON THE SCHEMATIC DIAGRAMS ARE CRITICAL FOR RISK OF FIRE AND ELECTRIC SHOCK.

REPLACE THESE COMPONENTS WITH ONKYO PARTS WHOSE PART NUMBERS APPEAR AS SHOWN IN MANUAL.

MAKE LEAKAGE-CURRENT OR RESISTANCE MEASUREMENTS TO DETERMINE THAT EXPOSED PARTS ARE ACCEPTABLY INSULATED FROM THE SUPPLY CIRCUIT BEFORE RETURNING THE APPLIANCE TO THE CUSTOMER.

#### TABLE OF CONTENTS

Service procedures .....	2
Block diagram .....	3
Schematic diagrams.....	5
Preamplifier section.....	5
DSP section.....	9
Power amp. section.....	13
Power supply & Video sections.....	17
Display section.....	21
PC board views.....	7
Pre., and DSP section.....	7
Power amp. section.....	11
Power supply and Video sections.....	15
Display section.....	19
Wiring view.....	23

A

B

C

D

PC BOARD VIEW

U11

MAIN CIRCUIT PC BOARD

PARTS SIDE A  
PCB SIDE A

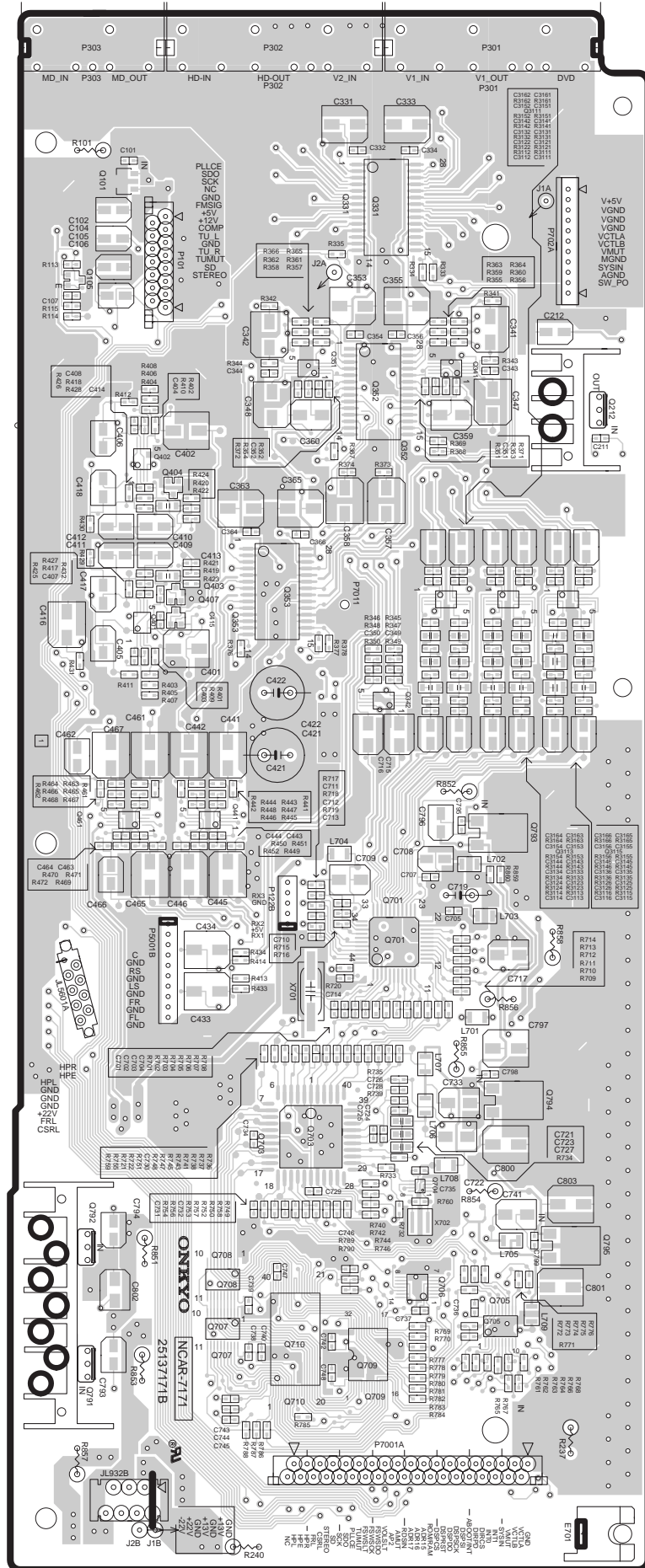
1

2

3

4

5









A

B

C

D

PRINTED CIRCUIT BOARD VIEW FROM SOLDERING SIDE 2-2

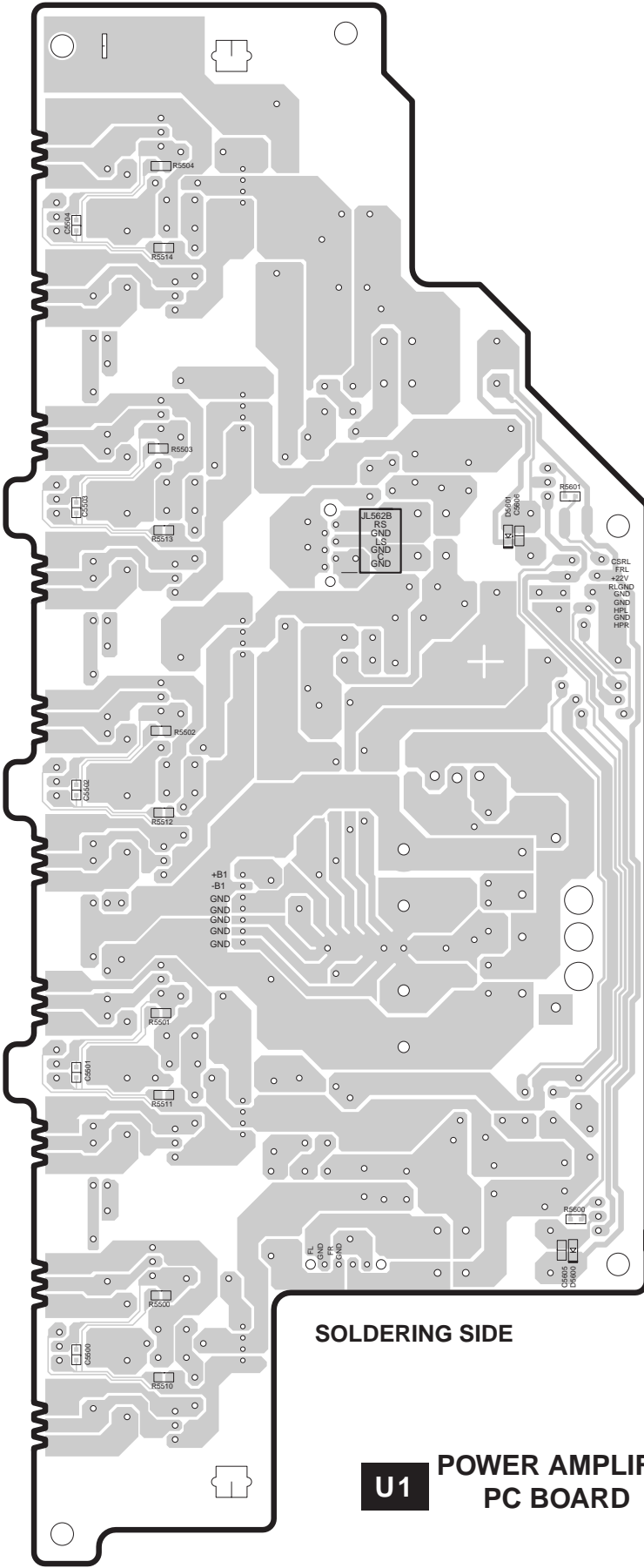
1

2

3

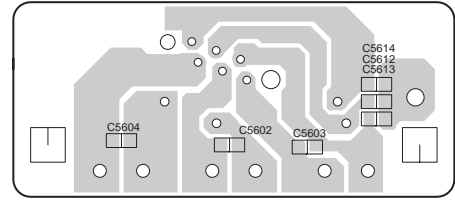
4

5

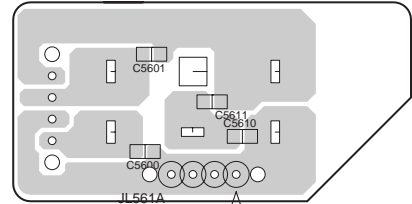


SOLDERING SIDE

**U1** POWER AMPLIFIER PC BOARD



**U7** SOLDERING SIDE SURROUND SPEAKER TERMINAL PC BOARD



**U6** SOLDERING SIDE FRONT SPEAKER TERMINAL PC BOARD











A

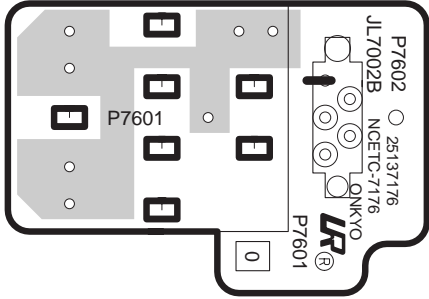
B

C

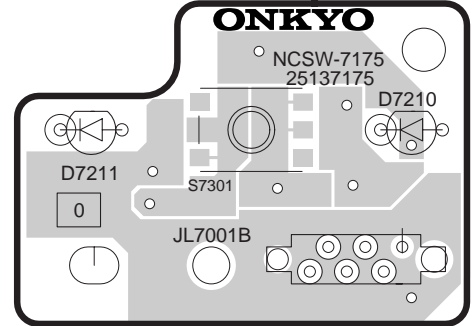
D

PRINTED CIRCUIT BOARD VIEW 4-3

1



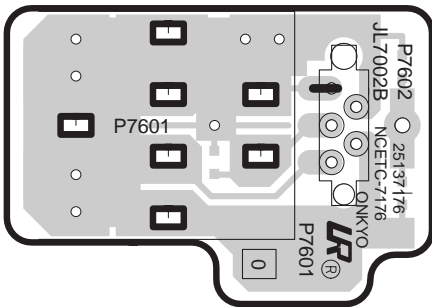
PARTS SIDE A PCB SIDE A



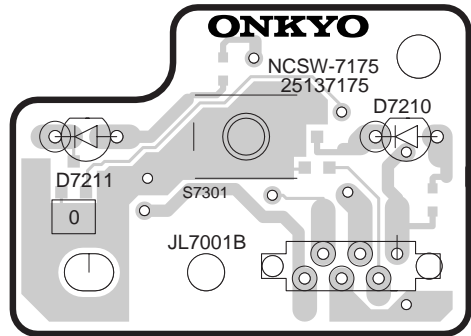
PARTS SIDE A PCB SIDE A

2

3

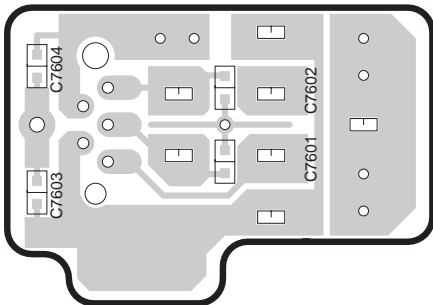


PARTS SIDE A PCB SIDE B

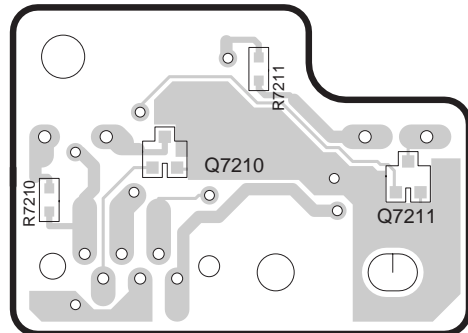


PARTS SIDE A PCB SIDE B

4



PARTS SIDE B PCB SIDE B



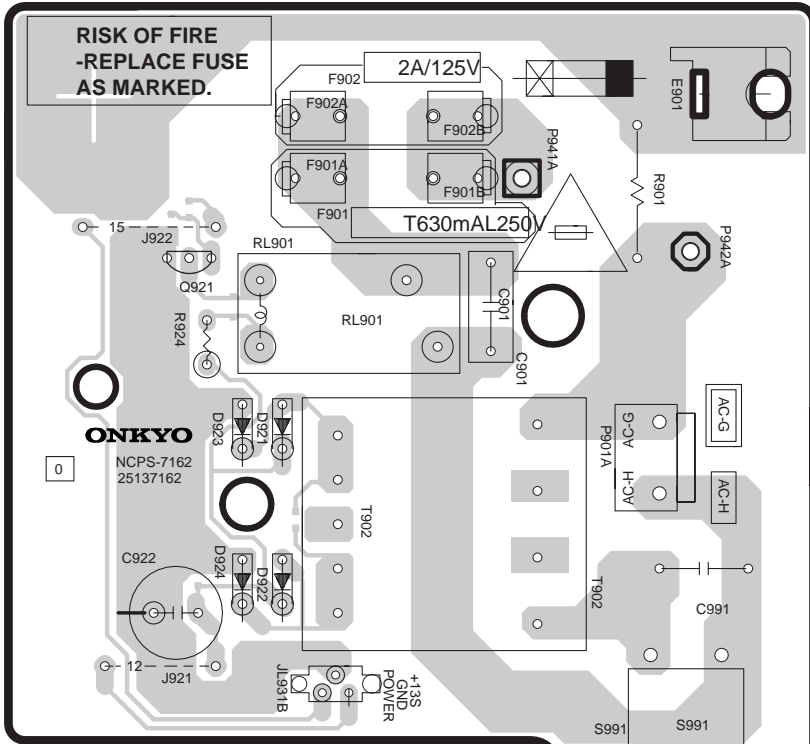
PARTS SIDE B PCB SIDE B

5

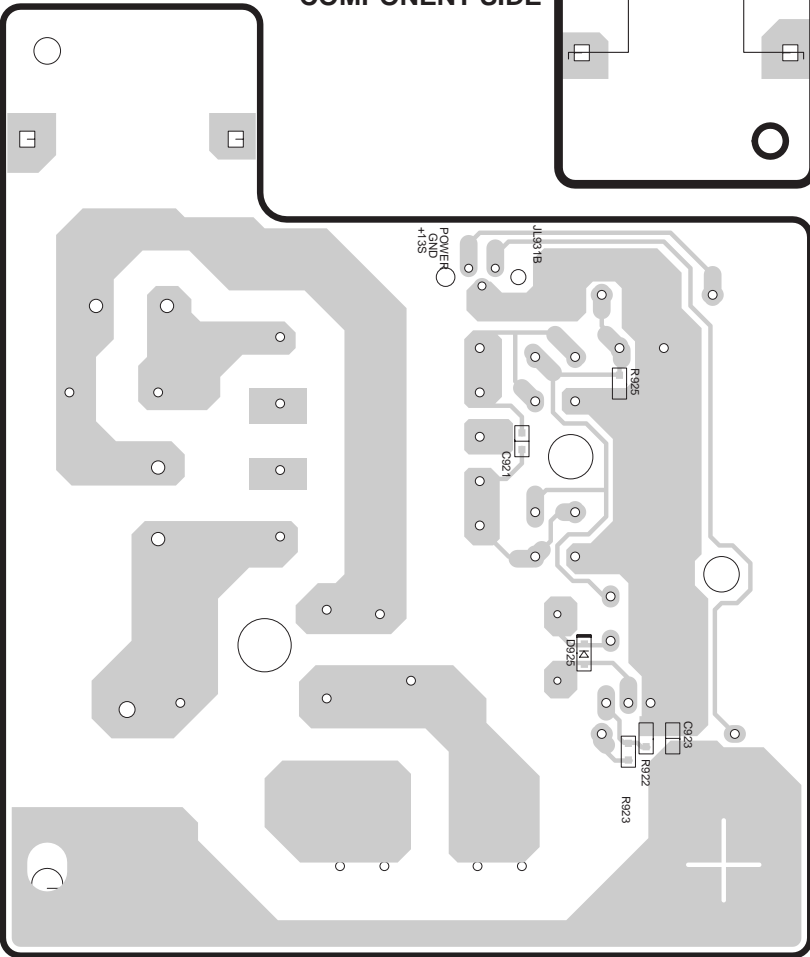
**U16** HEADPHONE PC BOARD

**U14** STANDBY SWITCH PC BOARD

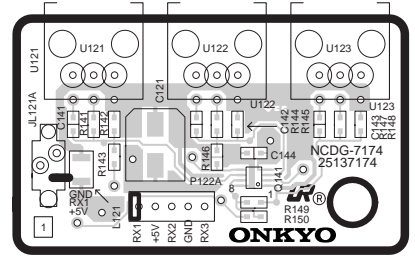
**PRINTED CIRCUIT BOARD VIEW 3-1**



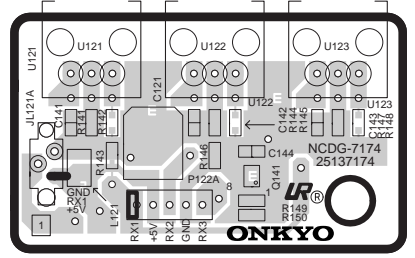
**COMPONENT SIDE**



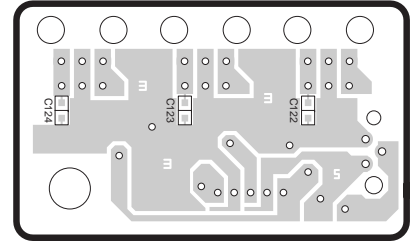
**U3 PRIMARY CIRUCIT PC BOARD SOLDERING SIDE**



**PARTS SIDE A  
PCB SIDE A**



**PARTS SIDE A  
PCB SIDE B**



**PARTS SIDE B  
PCB SIDE B**

**U14**

**OPTICAL  
INPUT  
TERMINAL  
PC BOARD**

1

2

3

4

5